



65th ANNUAL SALE OF  
**40**

HARDY HOME BRED WELSH MOUNTAIN RAMS

B & H JONES  
GWASTADANAS  
NANT GWYNANT  
CAERNARFON LL55 4NW  
TO BE SOLD AT GWASTADANAS  
TUESDAY 8th OCTOBER 2024 AT 5.00.P.M.

**Auctioneers:**

**LLOYD WILLIAMS & HUGHES**

## WHAT IS PERFORMANCE RECORDING?

Ewes and lambs in hill flocks are individually monitored and key indicators of commercially significant traits are recorded. The data is then analysed and the EBVs and Indexes that are the outcome, are a prediction of how progeny will perform which in turn can impact on your profits.

### To calculate the EBVs, Prohill are recording

- flock mating information and pre-tupping weights
- scanning results
- lambing ease and vigour
- 8 week weights
- backfat scanning at 20 weeks.

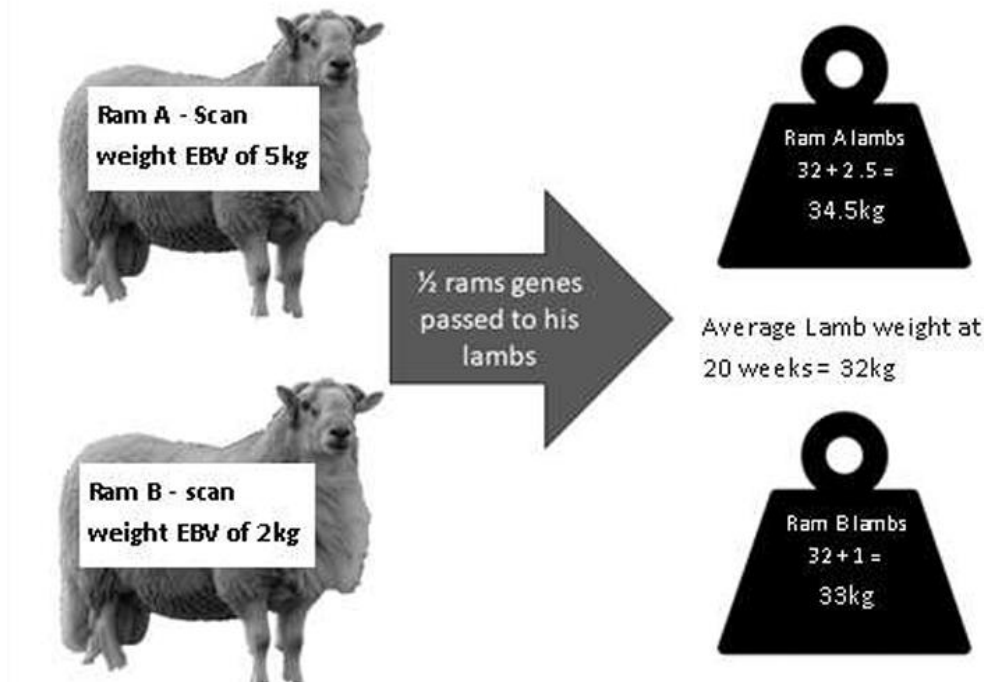
The data is analysed and used to create the Welsh Index which identifies sheep with superior breeding potential for meat and maternal traits, predicting the value of each ram to your flock.

You can use the estimated breeding values to pick rams that will improve the performance of their lambs and their daughters that come in to your flock.

EBVs for individual traits are expressed in the same units as the recorded trait (e.g. kg for eight week weight) and they relate to a common baseline. This baseline of zero relates to the average breeding value of lambs born in the year in 2015.

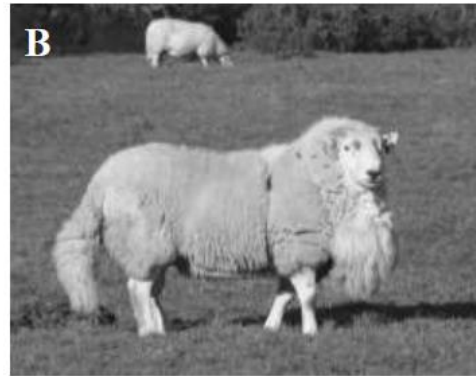
Since June 2023, the Welsh Index is expressed as the expected annual return per ewe in ££. EBVs are easy to interpret, for example: A ram with an EBV of +6 for scan weight is estimated to have the genetic potential to be 6kg heavier at 20/21 weeks compared to one with an EBV of 0.

A recorded ram will only pass on half of its genes to its lambs so its EBVs must be halved in order to estimate the average genetic worth of its progeny.

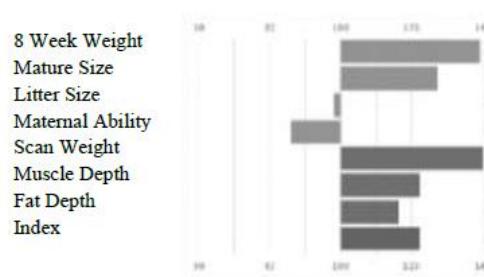
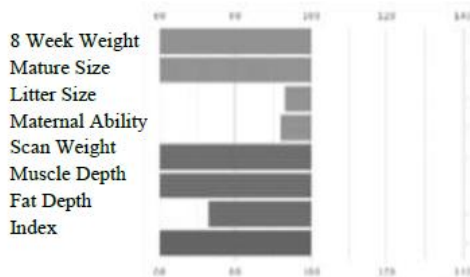


# CAN YOU SELECT A GOOD TUP BY EYE?

These two rams were a very similar type and were both purchased for four-figure sums and unrecorded at the time of purchase.



After joining a performance recorded flock, EBVs were calculated from the performance of the rams progeny. Ram A's lambs were mainly sold as store lambs and failed to make any significant growth. In comparison ram B produced fast finishing lambs that graded well. Ram A's EBVs were found to be below average on most traits, ram B's however have been proven above average for most traits, as shown below.



**Performance recording is an additional tool to assist in decision making when buying rams for your system. It allows you to make informed decisions about the rams, estimating their potential and the future performance of your hill flock.**

**For information, contact Bedwyr Jones on  
07801 355447**

Rhif Sel	Tag	Hill Index	Tad Sire
1	UK0702362 22325	£18.76	Gwastadanas 17965
2	UK0702362 22233	£13.68	Gwastadanas 17965
3	UK0702362 22080	£13.37	Gwastadanas 14227
4	UK0702362 22180	£11.72	Gwastadanas 17965
5	UK0702362 22108	£11.25	Gwastadanas 14227
6	UK0702362 22031	£10.77	Gwastadanas 17965
7	UK0702362 22324	£10.72	Gwastadanas 17868
8	UK0702362 22149	£9.45	Gwastadanas 17868
9	UK0702362 22327	£9.02	Gwastadanas 17965
10	UK0702362 22101	£8.72	Gwastadanas 17868
11	UK0702362 22131	£8.38	Gwastadanas 17965
12	UK0702362 22280	£7.92	Gwastadanas 14227
13	UK0702362 22267	£7.90	Gwastadanas 17868
14	UK0702362 21926	£6.31	Gwastadanas 17868
15	UK0702362 21920	£5.69	Gwastadanas 14227
16	UK0702362 21909	£1.68	Llwynffynon 4538
	<b>Hyrddod heb index</b>		
17	UK0702362 23819		
18	UK0702362 23814		
19	UK0702362 23206		
20	UK0702362 23103		
21	UK0702362 23205		
22	UK0702362 23847		

<b>23</b>	UK0702362 23130		
<b>24</b>	UK0702362 23222		
<b>25</b>	UK0702362 23227		
<b>26</b>	UK0702362 23117		
<b>27</b>	UK0702362 23211		
<b>28</b>	UK0702362 23126		
<b>29</b>	UK0702362 23102		
<b>30</b>	UK0702362 23121		
<b>31</b>	UK0702362 23224		
<b>32</b>	UK0702362 23213		
<b>33</b>	UK0702362 23230		
<b>34</b>	UK0702362 23209		
<b>35</b>	UK0702362 23841		
<b>36</b>	UK0702362 23210		
<b>37</b>	UK0702362 23201		
<b>38</b>	UK0702362 23116		
<b>39</b>	UK0702362 23225		
<b>40</b>	UK0702362 23229		
<b>41</b>	UK0702362 23226		
<b>42</b>	UK0702362 23104		

Canolfan arwerthiant

**BRYNCIR**

Auction centre

www.lwhbryncir.co.uk  
Bryncir, Gwynedd LL51 9LX  
Tel: 01766 530 828

**LW&H**

**Bryncir**



**NEXT Monday 7th October @ 11.30am SALE OF 275 STORE CATTLE AND  
Annual sale of 250 Suckling calves**

---

**THIS Saturday 5<sup>th</sup> October** – Annual Autumn Sale of Rare & Minority Breeds of Cattle, Sheep, Goats, Pigs, Poultry, to include show & Sale on behalf of the Badger Face Sheep Society- sale to start with Poultry **@10am**

**Catalogue available from our website and Facebook page**

---

**Tuesday 8<sup>th</sup> October @5pm** – 65<sup>th</sup> Annual Sale of **40** Hardy Home Bred Welsh Mountain Rams on behalf of B & H Jones, Gwastadanas

---

**Thursday 10<sup>th</sup> October @12 noon** – Welsh Mountain Rams- On behalf of Bryncir & District breeders. Entries required for catalogue

---

**SPECIAL DISPERSAL SALE OF THE CAE'RFFYNNON DAIRY HERD ON BEHALF OF G,E&W DAVIES-** Comprising 30 calved and in calf heifers & cows ON THURSDAY 17<sup>TH</sup> OCTOBER @11AM. Outside entries invited.

---

**Saturday 19<sup>th</sup> October** - Sale of Farm Machinery, Implements, Vehicles, Building Materials & Tools

---

**Every Monday @1pm** – Weekly Sale of Breeding Ewes, Stock Rams + Store Lambs

---

**Fatstock Sale Every Wednesday @11a.m** – Spring Lambs, Hoggets, Cull Ewes followed by Cull + OTM Cattle

**NOTES:**